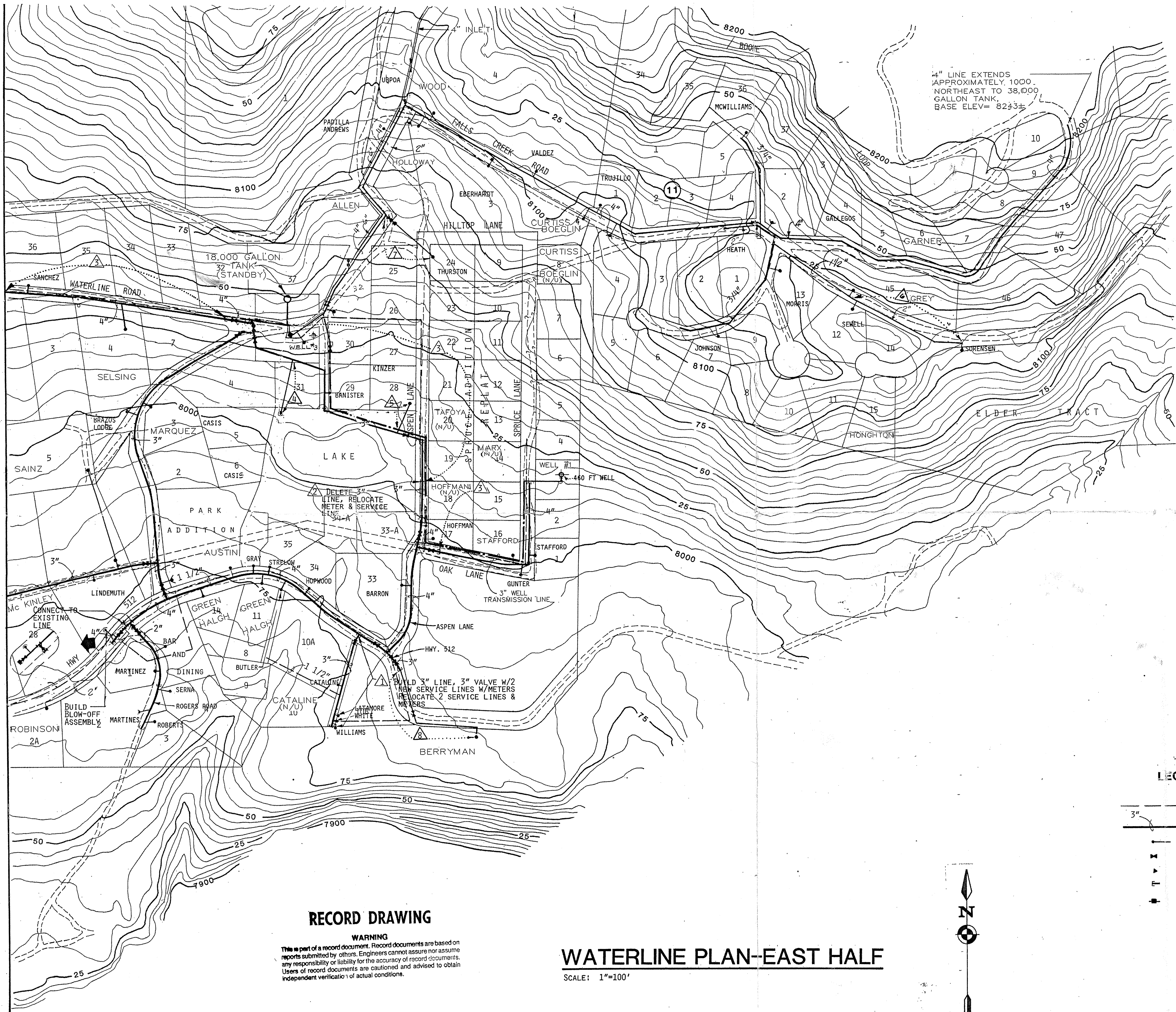


SHEET 2

TO

MATCHLINE

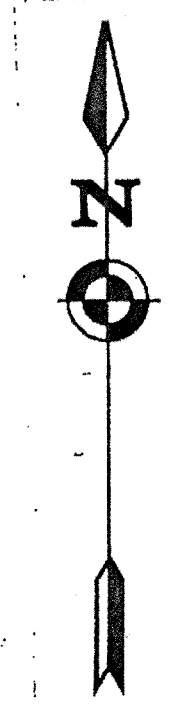


4" LINE EXTENDS  
APPROXIMATELY 1000'  
NORTHEAST TO 38,000  
GALLON TANK,  
BASE ELEV= 8243±

- REVISIONS**
- ① 9-17-90, ADDITION AS SHOWN PER J. HOFFMAN
  - ② 9-24-90, DELETION & RELOCATION PER J. HOFFMAN
  - ③ 5-22-91, CHANGE ORDER No. 2 ADDITIONS
  - ④ CASIS BRANCH 1995
  - ⑤ KINZER BRANCH 1995
  - ⑥ WALKER/SORENSEN EXTENSION 1995
  - ⑦ ASPEN LANE EXTENSION W/PRV 1996
  - ⑧ SAMPSON EXTENSION 1993
  - △ MAP UPDATE 1/23/02
  - MAP UPDATE 4/1/05

**LEGEND**

- EXISTING WATERLINE (2" UNLESS SHOWN OTHERWISE)
- NEW WATERLINE W/SIZE
- NEW SERVICE LINE AND METER
- ⊥ GATE VALVE
- ▽ REDUCER
- ⊥ END CAP W/BLOCKING
- ⊥ PRV STATION



**RECORD DRAWING**

**WARNING**  
This is part of a record document. Record documents are based on reports submitted by others. Engineers cannot assure nor assume any responsibility or liability for the accuracy of record documents. Users of record documents are cautioned and advised to obtain independent verification of actual conditions.

**WATERLINE PLAN-EAST HALF**

SCALE: 1"=100'



1/23/02

Date  
7/90  
Designed  
TOJ  
Checked  
TOJ

**Isaacson & Arfman, P.A.**  
CONSULTING ENGINEERING ASSOCIATES  
Albuquerque, New Mexico

1990 Renewal Program  
Brazos Water Co-op

WATERLINE PLAN-EAST HALF

Sheet  
3  
of  
5